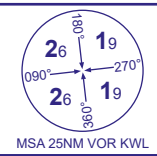


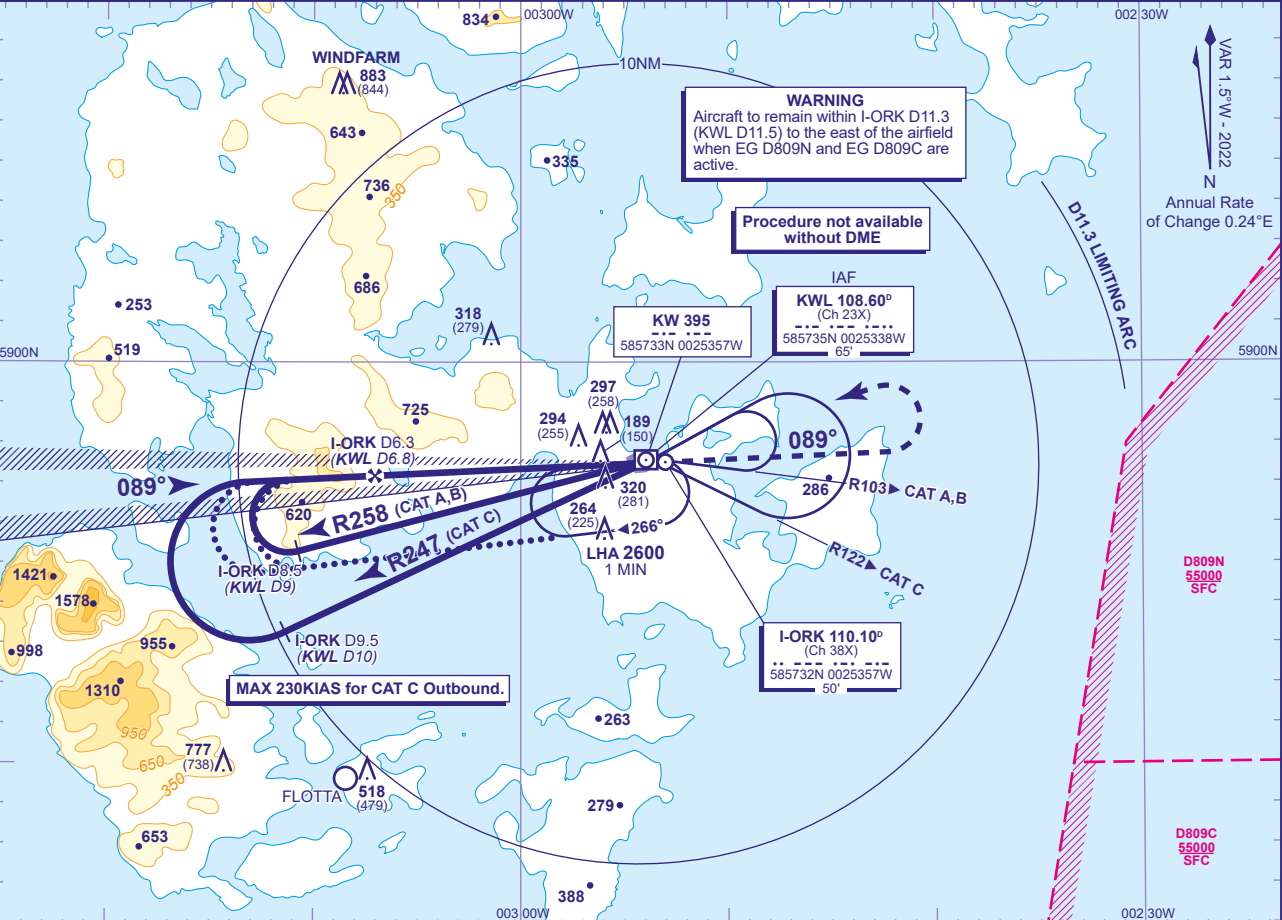
INSTRUMENT APPROACH CHART - ICAO

KIRKWALL
ILS/DME/VOR
RWY 09
(ACFT CAT A,B,C)



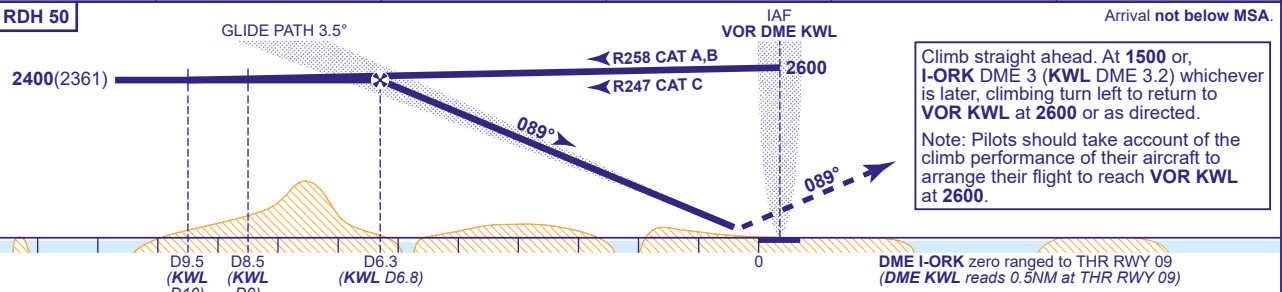
APP	118.305	KIRKWALL APPROACH	AD ELEVATION	58
TWR	118.305	KIRKWALL TOWER	THR ELEVATION	39
AFIS	118.305	KIRKWALL INFORMATION	OBSTACLE ELEVATION	883 AMSL (844) (ABOVE THR)
ATIS	108.600	KIRKWALL INFORMATION	BEARINGS ARE MAGNETIC	

TRANSITION ALTITUDE
3000



RECOMMENDED PROFILE GLIDE PATH 3.5°, 370FT/NM

DME I-ORK(KWL)	5(5.5)	4(4.5)	3(3.5)	2(2.5)	1(1.5)
ALT(HGT)	1920(1881)	1560(1521)	1190(1151)	820(781)	460(421)



Aircraft Category	A	B	C	Rate of descent	G/S KT	160	140	120	100	80
OCA (OCH)	CAT I	184(145)	193(154)	202(163)	FT/MIN	990	870	740	620	500
VM(C)OCA (OCH AAL)	Total Area	650(592)	660(602)	1250(1192)						
	South of RWY 09/27	650(592)	660(602)	760(702)						

ALTERNATIVE PROCEDURE
Arrival not below MSA. Overhead VOR/DME KWL (IAF) at 2600 turn to establish on the outbound leg of the holding pattern. Extend the outbound leg of the hold descending to 2400. At I-ORK DME 8.5 (KWL DME 9) (CAT A,B) or I-ORK DME 9.5 (KWL DME 10) (CAT C) turn right to establish on the localizer; when established continue as for basic procedure.

ENTRY TO BASE TURN PROCEDURE AFTER HOLDING
If required, the Base Turn procedure may be entered after holding by flying a teardrop reversal manoeuvre from overhead the holding facility after flying inbound in the hold as follows: Fly outbound on track 103°M (CAT A,B) or 122°M (CAT C) for 1 MIN then turn left to return to the overhead to enter the base turn procedure. Lowest altitude to commence procedure from the hold is 2600.

NOTE NDB KW may be used in lieu of VOR KWL.

CHANGE (8/21): I-ORK DME ELEVATION. MAG VAR. MAG TRACKS. OBSTACLES.